

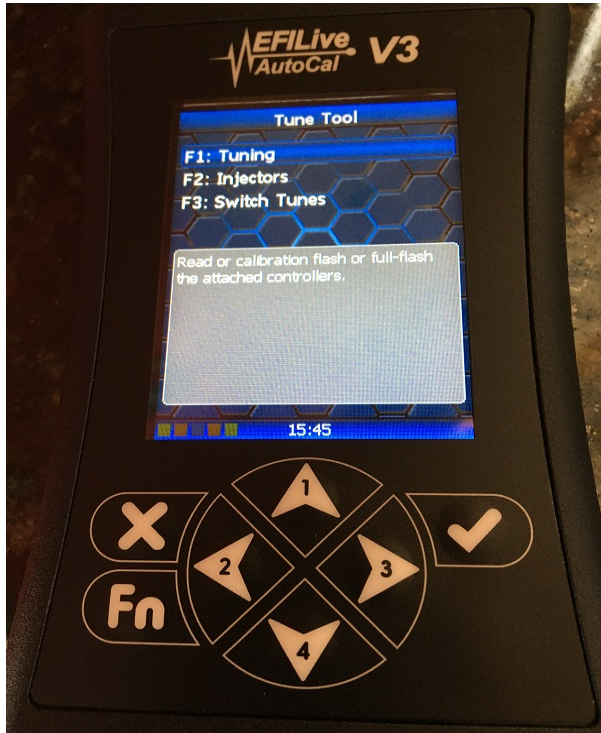
1) Read the stock file from your Controller

With the car “Off” plug the tuner into your OBD2 diagnostic port (use the cable included). The OBD2 diagnostic port is located below the steering wheel. With your foot off the brake, press and hold the start button for ~10 seconds until the dash lights up. This will place the car in diagnostics mode to prevent the power from turning off during programming. Do not start the car.

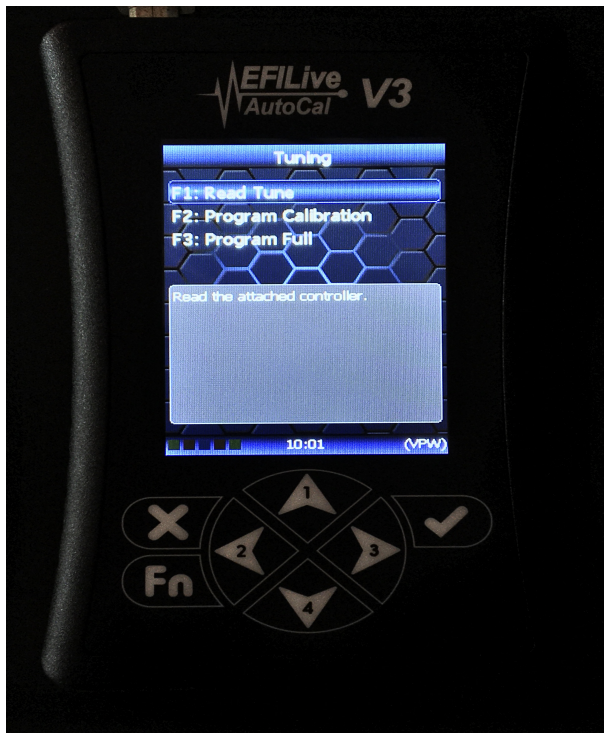
Press the ✓ button to accept the End User License Agreement. Select the “Tune Tool” option button and press the ✓ button



Select F1: Tuning and press the ✓ button



Select F1: Read Tune and press the ✓ button



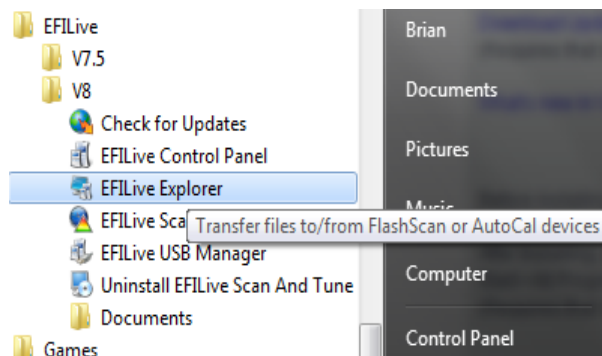
Select the E80 Controller option and press the ✓ button to begin reading the file.



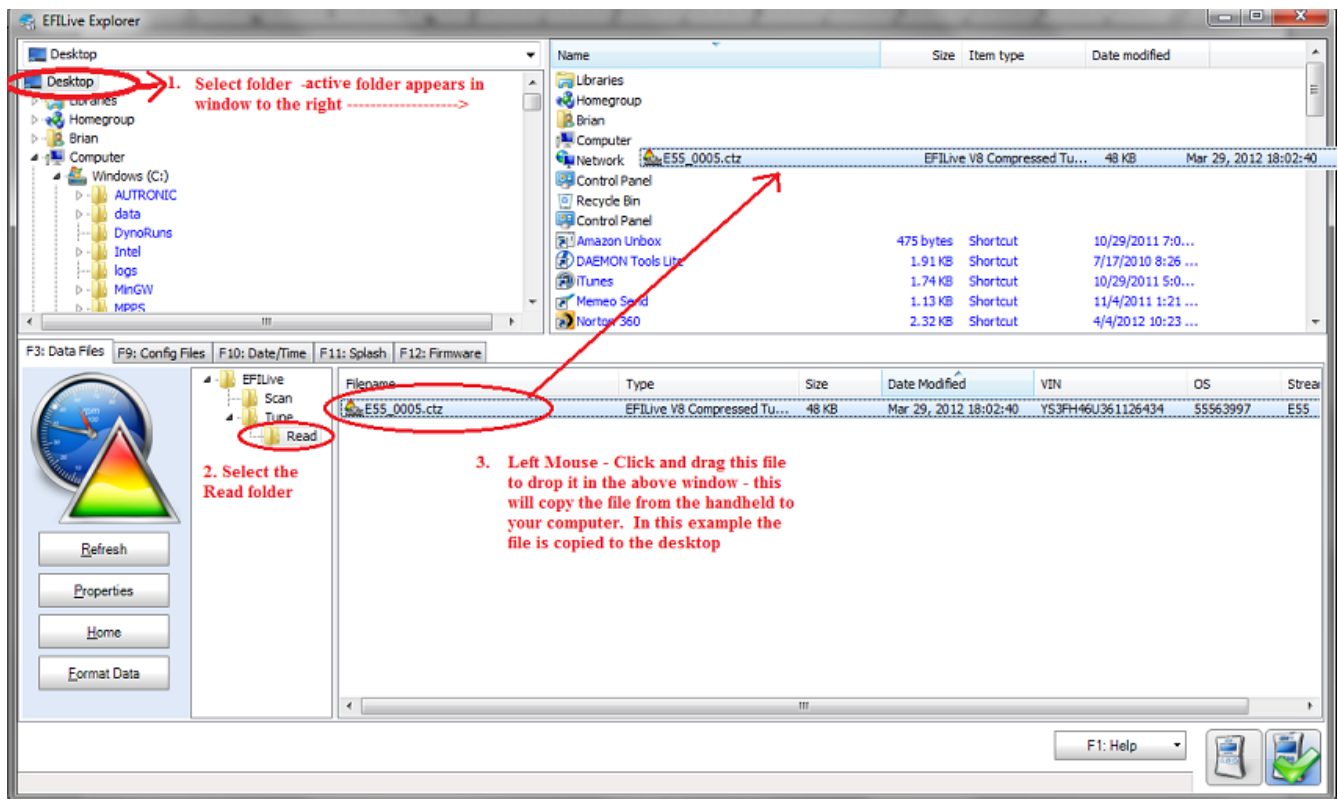
The display will show a progress bar and will prompt you to turn the key to the “Off” position when it is finished. Press the ✓ again and it will run a count-down timer to allow the computer in the car to reset before you start the engine.

2) Unplug the tuner from the car and connect it to your computer using the USB cable.

Open EFILive V8 Explorer:



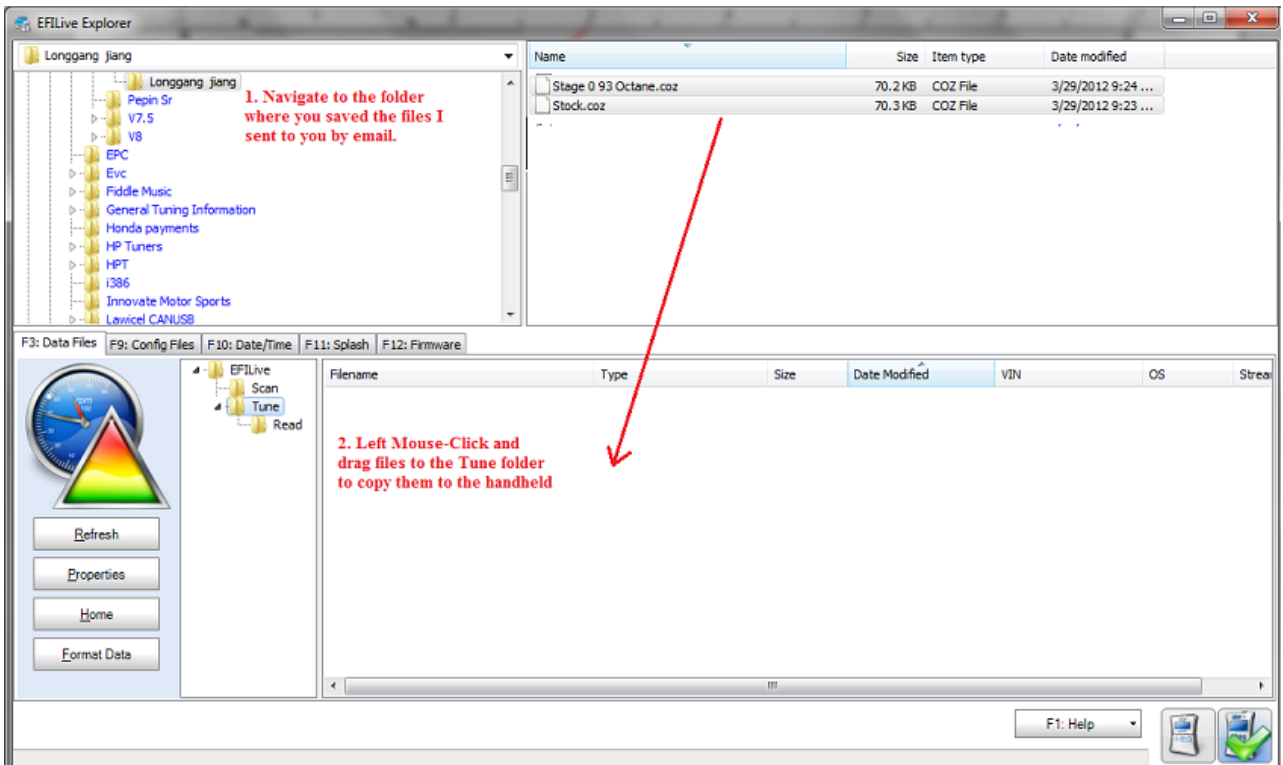
3) Copy files from the handheld to your computer and email the files:



Email the E80_000X.ctz file to vermontuner@yahoo.com.

Note – you should delete this file from the handheld after you copy it to your PC as it is never used again and will take up most of the available storage space.

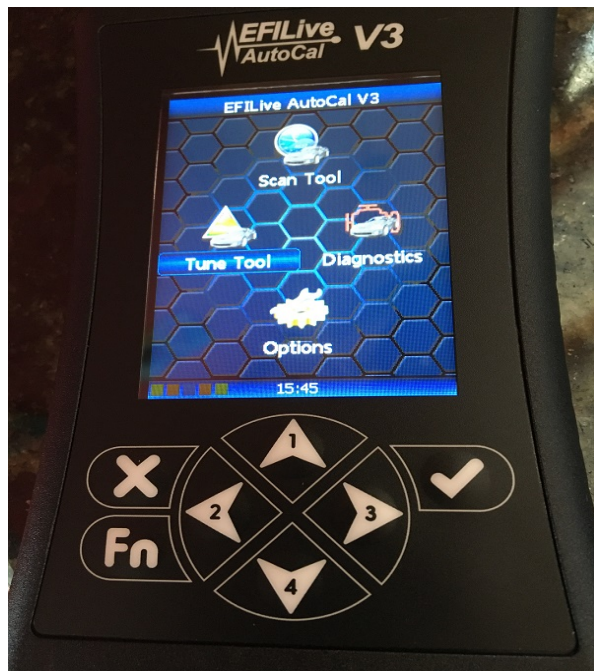
4) I will email to you the new tune files within 24hrs. Once you receive the new files, open EFILive Explorer again and copy the new files to the Tune directory:



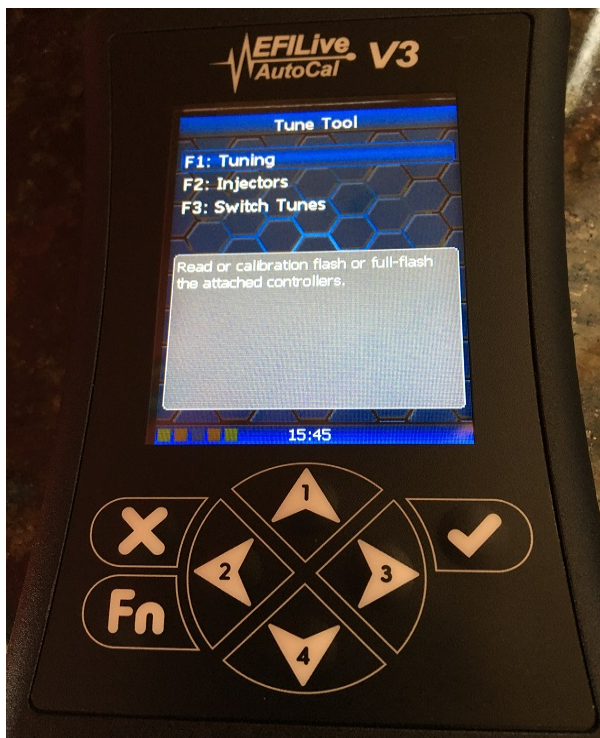
5) Unplug the handheld from your computer and go to your car.

To flash a new calibration file – With the car “Off” plug the tuner into your OBD2 diagnostic port. With your foot off the brake, press and hold the “Start” button until the dash lights up to turn on the accessory power (**do not** start the car).

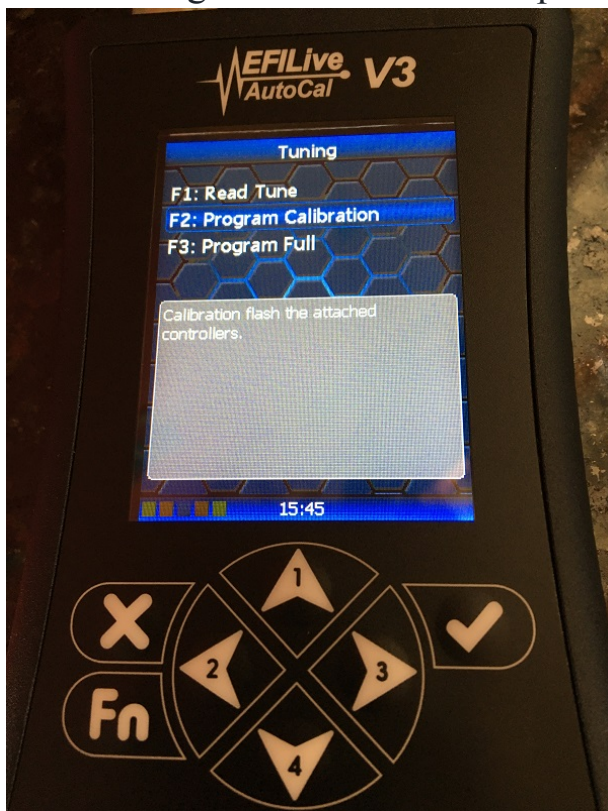
Press the ✓ button to accept the End User License Agreement.
 Select the Tune Tool option and press the ✓ button



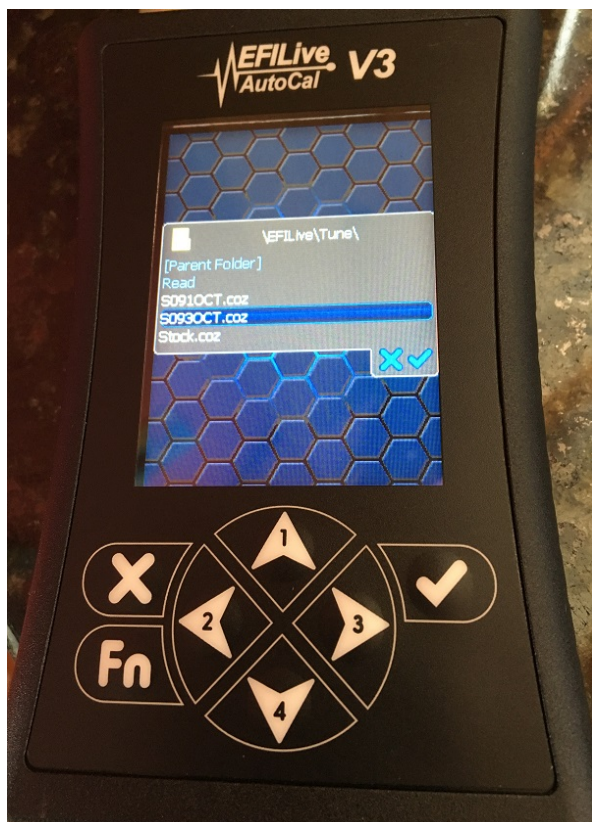
Select F1: Tuning and press the ✓ button



Select F2: Program Calibration and press the ✓ button



Your installed calibrations will be listed: Select the file you wish to install, then press the ✓ button to begin the flash.



You will be asked to license the vehicle the first time you program the ECM - just accept the license each time it prompts you to confirm.

Wait for the installation to complete – the handheld will prompt you to turn off the ignition when it is done. Press the “OK” key and it will count-down a timer to allow it time to reset the ECM before you start the engine. That's it – just unplug the tuner and enjoy the new power!

Data Logging:

You start a data log by navigating through the menu options Scan Tool --> Data Logging --> Record Data. Press the ✓ button to begin the data log. Once the log begins it will display a timer indicating the elapsed time. If you do not see the timer and a message displays like Unknwn PIDs then just press the ✓ button and the timer should appear. You must exit/save the log before you disconnect the handheld or the data will be lost. Just press the X button while the timer is running to exit/save the log (it will prompt you to press the ✓ button to confirm that you wish to exit and save). I like to see 5-10 minutes of mixed driving with some wide open throttle acceleration through the first couple of gears. To transfer the logs from the handheld to your computer, start the EFILive V8 Explorer application and click on the “Scan” folder. Your data logs will appear under this folder with file names like E80_0001.efi.

Cheers,

Brian Blair

Vermont Tuning LLC